

Four Seasons Building Products

"Alpha Plus" Patio Enclosures



**Four Seasons Building Products
Presents
C-Thru Sunrooms – Alpha Plus Patio Enclosures**



FOUR SEASONS
BUILDING PRODUCTS





January 1, 2019

Four Seasons Building Products

Four Seasons Building Products is a subsidiary of the Latium Group, a global building products conglomerate. Four Seasons Building Products has twenty manufacturing and service centers throughout the United States. Products manufactured and distributed by this group include; Patio Enclosures, LifeRooms, Screen Rooms, Patio Covers, Lattice Covers, Carports, Window Awnings, Replacement Windows and other residential and commercial building products. Four Seasons Building Products is the largest supplier of Patio Covers & Sunrooms in North America.

Four Seasons Building Products has furnished the remodeling and new construction industry with high quality products for well over forty-years. Our products have been successfully sold, furnished and installed by our factory authorized dealer/distributors in all fifty states. The products manufactured by Four Seasons Building Products have been tested, approved and recommended by most local, state and national agencies as well as building departments throughout the country. ICC (International Code Council), Underwriters Laboratories, IAPMO (International Association Plumbing & Mechanical Officials), AAMA, IBC/IRC (International Building Code) and others have monitored our products over the years. The fact that Four Seasons Building Products is part of a large privately owned global building products company should endorse the type of products that we sell. We cannot afford to offer anything but high quality products, outstanding service and solid warranties backing our products.

Four Seasons Building Products will continue to strive to be the industry leader in the residential and commercial building products industry. Our commitment to quality, service and total customer satisfaction, will be second to none.

FOUR SEASONS BUILDING PRODUCTS

6450 Caballero Blvd, Buena Park CA 90620 P 800.457.9959 F 800.742.0464 buildingproducts.com



Why C-Thru Is The Clear Choice

C-Thru has been adding space and value to homes since 1947 and with that kind of longevity, comes a commitment to quality above all. Over the last seven decades, we have achieved success by constantly improving our products and services, delivering cutting-edge technology backed by the industry's best warranties.

In 2019, C-Thru was acquired by the Latium USA group of companies. Latium USA's portfolio of companies are known for high quality products that innovate and transform outdoor living spaces while adding value to your largest asset; your home. One of the largest companies in the Latium USA family is Four Seasons Building Products. Four Seasons Building Products is proud to offer the C-Thru product throughout their network of dealers, ensuring a best-in-class patio room product.

C-Thru is a company that prides itself on the values we've nurtured for the last 70+ years, a commitment to localized customer service, and core values that have made choosing American made the very best option. With the backing of an international group of companies, these values are just further enhanced with added peace of mind that you're making the right decision for your home and your family.



Throughout The Years Patio Rooms Have Always Had A High Return On Investment



According to U.S News and World report...

Return on Investment

➤ Major Kitchen Remodel	90%
➤ Bathroom Remodel	80%
➤ New Windows/Doors	75%
➤ Room Addition	70%
➤ SUNROOM ADDITION	100%

A C-Thru Sunroom is a *very smart* investment!



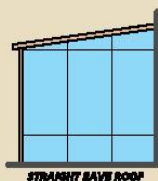


Not Your Ordinary Patio Enclosure

Since its introduction more than three decades ago, C-Thru's Patio Room has evolved into the perfect blend of beauty, functional design and affordability.

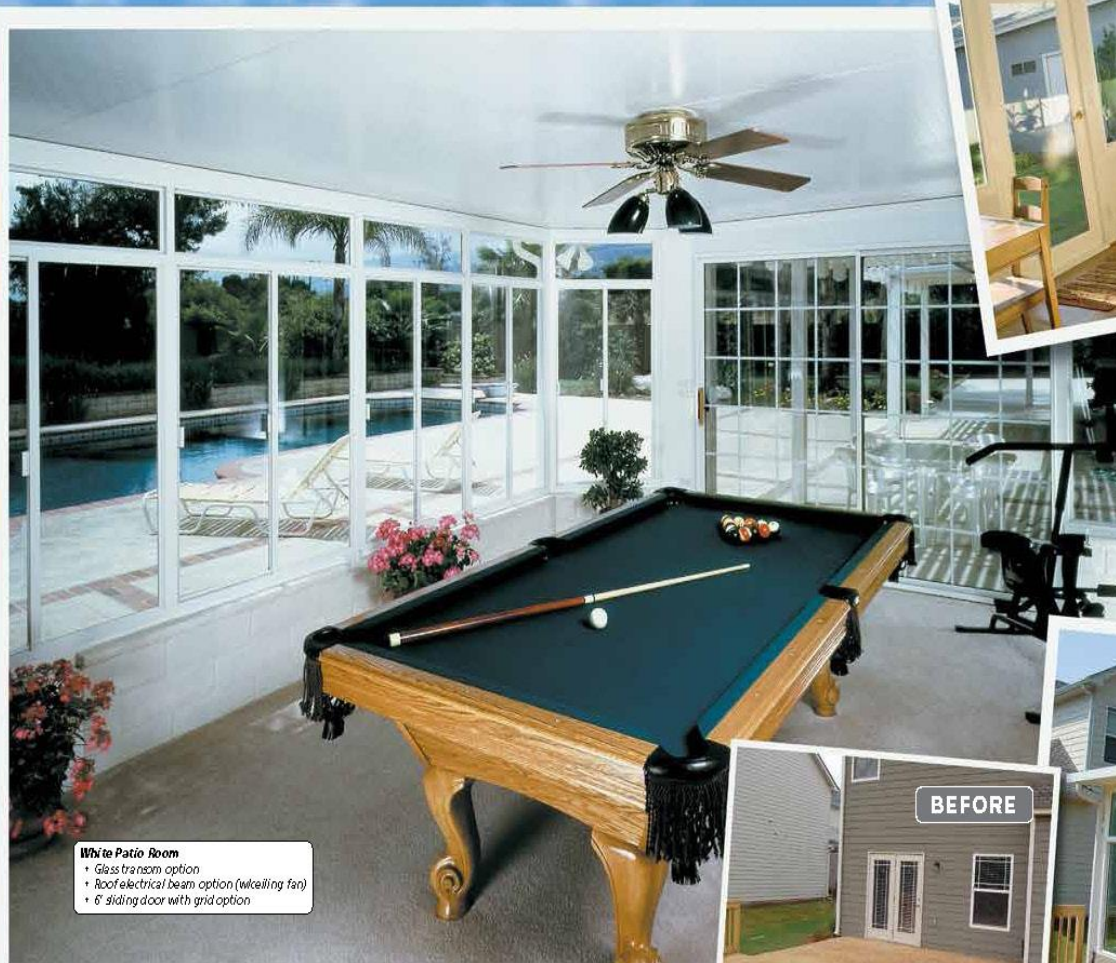
We have taken the Patio Room from ordinary to extraordinary! Starting with our insulated Weather Guard roof system, your new room will have a level of year-round comfort not seen in most other Patio Enclosures. Plus, with our extensive list of options and upgrades, like, sliding glass doors, french doors, glass kickplates and upper transoms, you can transform your Patio Enclosure in to a dream come true!

See pages 24-27 for room packages and upgrades.



STUDIO

Patio Rooms



White Patio Room
• Glass transom option
• Roof electrical beam option (w/ceiling fan)
• 6' sliding door with grid option

White Patio Room
• Solid insulated kickplates - standard
• Glass transom option
• Electrical system option
• 6' French door option



AFTER!

BEFORE



White Patio Room
• 3' pedestrian door
• Glass transom option



Go green and \$ave green with the best and most energy efficient patio rooms available on the market today.



Relax. You're
Buying the Best
Room with the
Best Warranty.



Another reason to choose a C-Thru Sunroom is that we have been manufacturing the highest quality sunrooms and components for over 60 years. It's this kind of experience coupled with our constant innovation that allows us to confidently offer the industry's most aggressive warranty – for life!

Beware of Look-a-like Imitations

Other sunrooms may look the same, but unless they bear the C-Thru name, buyer beware!

The many patented and exclusive features we offer mean superior performance for you. C-Thru's products are designed to meet or exceed most building code structural requirements, and have over a half a century of successful installations.

STUDIO

Patio Rooms

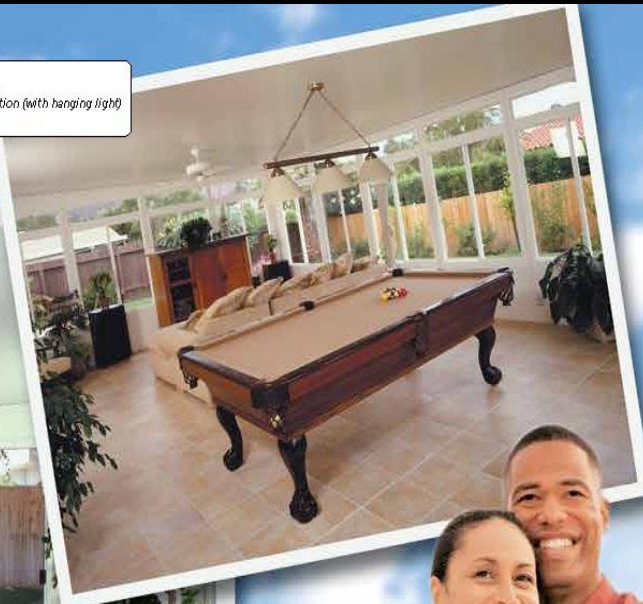


White Patio Room

- Glass transom option
- Electrical system option
- Roof electrical beam option (w/ ceiling fan)
- 6" sliding door option

White Patio Room

- Electrical system option
- Roof electrical beam option (with hanging light)
- 6" sliding door option



BEFORE

AFTER!



White Patio Room

- Electrical system option
- 3" pedestrian door option



C-Thru recycles 98% of all scrap materials
after building each sunroom.

A Great Place To Entertain Friends



Bright & Cheery Garden Room



Pool-Side Garden Room



“Terrace Room” w/Upper Glass Transoms





A Room for Every Reason

It's true that sunrooms create a beautiful and dreamy retreat for you and your family. But don't be surprised if you find yourself inhabiting your new sunroom more than any room in the house!

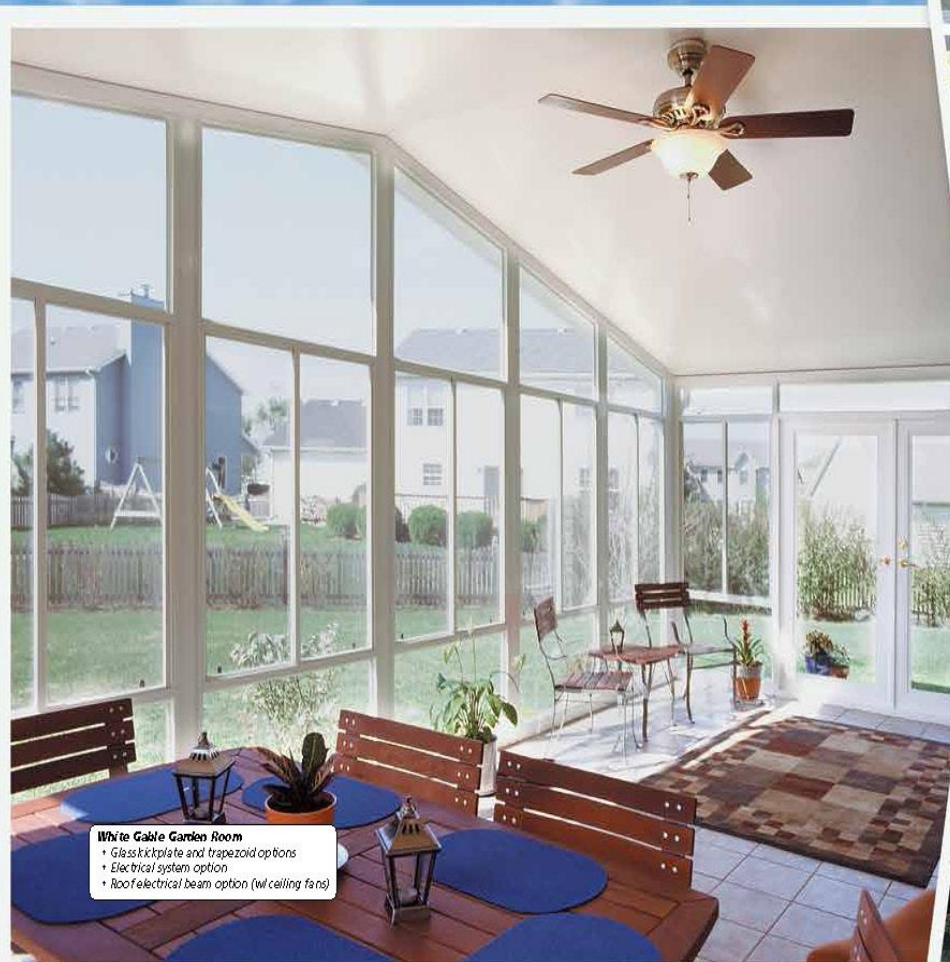
By day, your sunroom may become an expansive kids rec room, hobby room or home office. By night, your sunroom may quickly be transformed into a magnificent entertainment area or a romantic getaway. The uses are nearly as endless as the views on a starry night.

10 Rooms in 1

Living Room
Home Gym
Family Room
Kids Rec Room
Home Office
Spa Room
Mud Room
Breakfast Nook
Poolside Room
Hobby & Crafts Room

All for the cost of only one room!

Gabled Rooms



White Gable Garden Room
• Glass kickplate and trapezoid options
• Electrical system option
• Roof electrical beam option (w/ ceiling fans)



White Gable Garden Room
• Solid insulated kick plates – standard
• Glass trapezoid option
• Electrical system option
• Roof electrical beam option (w/ ceiling fans)
• Pedestrian door option



White Gable Garden Room
• Solid insulated kick plate – standard
• Glass trapezoid option
• Electrical system option
• Roof electrical beam option (with ceiling fans)
• Pedestrian door option



Metal free is where you want to be! Minimize metal conductivity – increase energy savings.



Gabled Rooms

Return On Investment

SOURCE: U.S. NEWS & WORLD REPORTER BRUNT

- Sunroom Addition
100%
- Adding Skylights
94%
- Major Kitchen Remodeling
90%
- Remodeling a Bathroom
80%
- Adding a Wood Deck
80%
- Adding Insulation
77%
- New Windows/Doors
75%
- Room Addition
72%
- Adding a Swimming Pool
33%

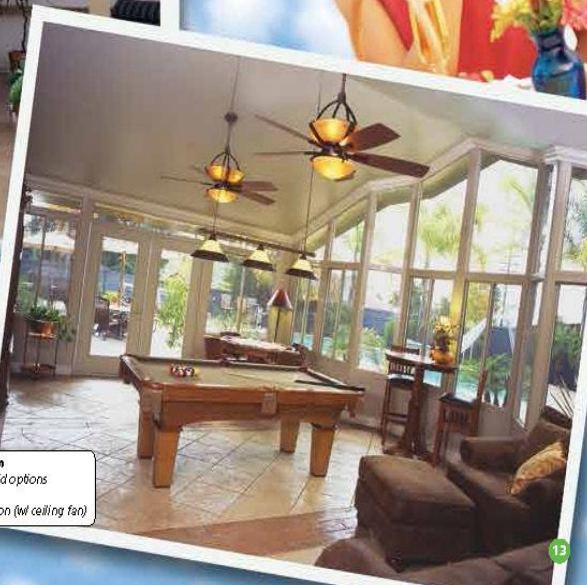
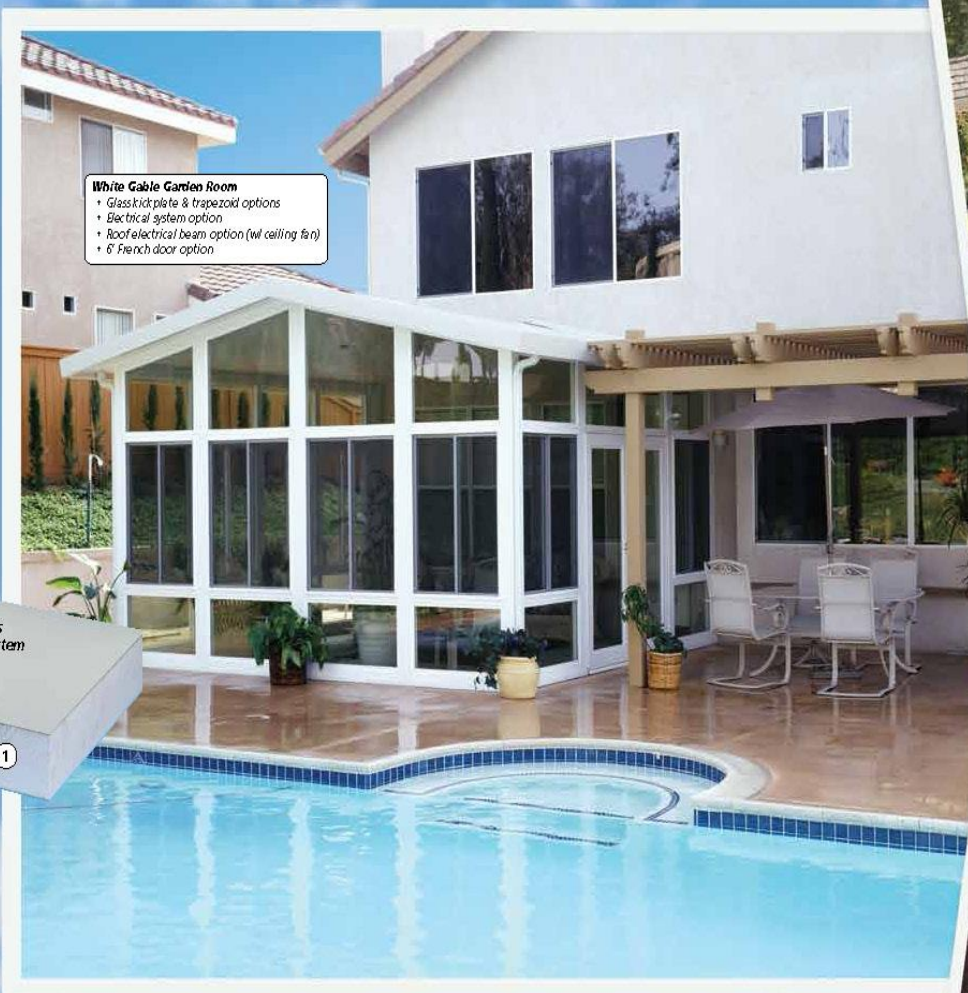
White Gable Garden Room

- Glass kick plate & trapezoid options
- Electrical system option
- Roof electrical beam option (w/ ceiling fan)
- 6" French door option

White Gable Garden Room

- Glass trapezoid option
- 3" glass door option

Note: Aftermarket roof shingles shown. Check with your local C-Thru Dealer for building code requirements.



White Gable Garden Room

- Glass kick plate & trapezoid options
- Electrical system option
- Roof electrical beam option (w/ ceiling fan)

Cross Section of C-Thru's Patented Insulated Roof System



1. Solid Insulated Roof System
C-Thru's patented solid insulated roof system is highly insulated, strong enough to walk on and very low maintenance.
2. Optional Fan/Ceiling Light Beam
Can be placed throughout the roof to attach fans and lighting while concealing all electrical wiring.
3. Heavy Duty Gutter with Optional Leaf Guard
An ideal feature for directing the water safely out of harm's way.



The 50 MPG Sunroom – the room that pays for itself! Ask us for details.



A bright, sunlit sunroom with large multi-paned windows overlooking a forest. The room is furnished with wooden art easels, a small table with art supplies, and a ceiling fan with lights. The space is designed for relaxation and creative activities. In the foreground, a wooden easel holds a painting of a landscape. To the left, a small wooden table holds a palette and brushes. In the background, another easel holds a painting, and a small table holds more art supplies. The room has a white ceiling with a dark wood ceiling fan and two white light fixtures. The floor is covered with a dark blue patterned rug. The overall atmosphere is peaceful and creative.

THE ULTIMATE "Game Room"



Stylish Gabled Patio Room



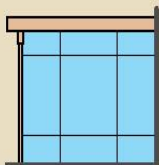


Have an Existing Patio Roof? No Problem!

So, what if you have been dreaming of a new sun-room, but your home has an existing patio roof? Simple, call C-Thru!

C-Thru offers you a convenient and affordable way to transform an ordinary patio roof in to a year-round paradise. Our engineers will work to manufacture the wall configurations you desire to fit the existing patio roof perfectly.

Depending on the options you choose, you now can easily transform your existing patio cover into a year-round, sun-drenched retreat to watch the seasons change while in the comfort and protection of an enclosed patio room.



WALLS ONLY UNDER
EXISTING PATIO COVER

WALLS UNDER EXISTING ROOF

Patio Rooms



White Patio Walls Under Existing Roof
• Glass kick plate option
• 3" pedestrian door option

AFTER!



BEFORE



AFTER!



BEFORE

Expand the square footage of your existing patio cover by simply bumping it out with our straight or curved eave roof and walls.



White Patio Walls Under Existing Roof
• Glass kick plates and transom options
• 6" sliding door option

C-Thru's Alpha Plus Patio Enclosures offer a wide variety of design options for Window Wall Sections... Minimum Glass to Maximum Glass, the Decision is Yours!

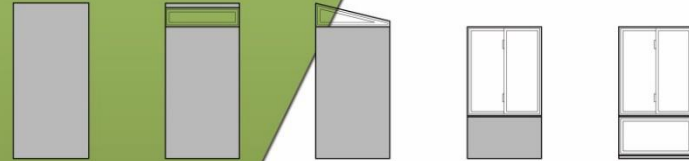


SUNROOMS & PATIO COVERS

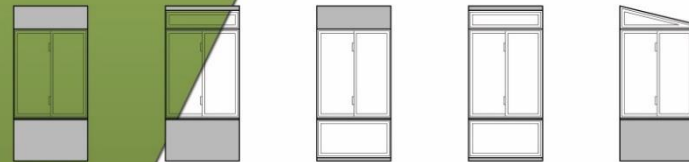
C-THRU INDUSTRIES

Dimensions & Specs

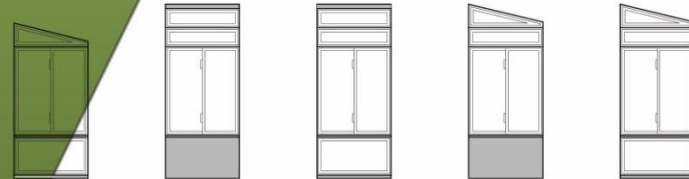
Win/Wall Mod. Combos



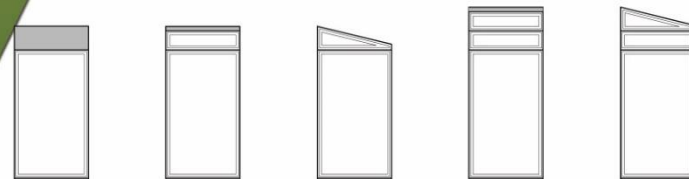
SOLID/TRANSOM/TRAPIZOID & CURVED EAVE FRONT WALLS



REG. HIGH WALL & SINGLE STACK TRANSOM/TRAPIZOID



EXTRA TALL WALL & DOUBLE STACKED TRANSOM/TRAPIZOIDS



3' & 4' - 6'-8" FIXED GLASS, REG & EXTRA TALL WALL

NOTE:

1. STANDARD TRANSOM/KICKPLATE SIZES ARE 12" OR 24".
2. MAX. TRAPIZOID SIZE IS 48".



“Solid Upper Transom Option”



"Glass Upper Transom Option"



“Solid Upper Transom Option”



“Step-Glass Upper Transom Option”



Combination Patio Room & Elitewood Patio Cover



IAPMO ES Certified Engineering



Call the
~~Assurance~~
~~insurance~~
company

C-Thru's Patio Enclosure Products have been fully Tested and Evaluated by IAPMO Uniform Evaluation Services.

This certification of our products ensures consumers and building officials that our products meet and exceed all local, regional and national engineering standards.

EVALUATION REPORT



Report Number: 0181
Originally Issued: 01/2012
Revised: 02/01/2013
Valid Through: 01/2014

Division: 10 - SPECIALTIES
Section: 10530 - Protective Cover

REPORT HOLDER:

C-Thru Industries Inc.
1477 Darvil Circle
Corona CA 92880
<http://www.c-thru.com>

EVALUATION SUBJECT:
Omega 4 wall and Glass Roof System

1.0 EVALUATION SCOPE

1.1 Compliance with the following codes & Regulations:

2009 International Building Code® (IBC)

2009 International Residential Code® (IRC)

1.2 Evaluated in accordance with:

ICC-ES AC 340, approved October 2010

1.3 Property Evaluated:

Structural

2.0 USES

The combination of the Omega 4 Enclosure System and the LRP or glass Roof System together form a system used as an attached patio enclosure for residential applications. The system is considered enclosed use of the assembly for unenclosed structures exceeds the scope of this evaluation report. If the system is used to enclose an existing unenclosed patio, the owner may be required to obtain approval from the local Building and Safety department for the attachments to the existing unenclosed structure. These enclosures are intended to be non-habitable structures conforming to Appendix I of the International Building Code and Appendix H of the International Residential Code.

3.0 GENERAL DESCRIPTION

3.1 Product Information:

3.1.1 3"Omega 4 Patio Enclosure System: The Omega 4 Patio Enclosure System described in drawings 11 thru 14, consists of bearing and nonbearing wall panels, aluminum mullions and posts. With an alloy and temper of 6063-T5.

3.1.2 LRP Roof System: The LRP Roof System described in drawings 3 thru 5 consists of hybrid panels consisting of structural insulated panels (SIP) with aluminum extrusions. The LRP Roof System is outside the review scope of this report. The LRP Roof System used with the structural components described in this report to form enclosed residential patio covers must be recognized and listed by a third party agency such as IAPMO ES or Factory Built Housing.

3.1.3 Glass Roof System: The glass roof support framing system shall be designed per 2009 IBC Chapter 24 with a deflection limited to L/175 of the glass edge length or 0.75". The glazing for the glass roof shall be either insulated with 1/8" thick fully tempered glass on the top and bottom or 3/16" thick fully tempered glass.

3.2 Materials: General material specification are listed in Section II of the Drawing General Notes and specifications.

3.2.1 3"Omega 4 Patio Enclosure System: The Omega 4 Patio Enclosure System aluminum mullions and posts consist of an alloy and temper of 6063-T5.

3.1.3 Glass Roof System: The glazing for the glass roof shall be either insulated with 1/8" thick fully tempered glass on the top and bottom or 3/16" thick fully tempered glass.

4.0 DESIGN AND INSTALLATION

4.1 Design:

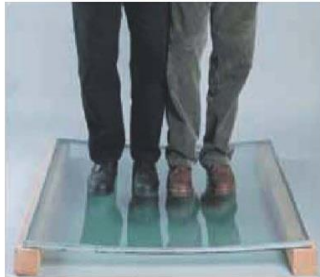
4.1.1 LRP Roof System: Design of the LRP Roof System shall be in accordance with its evaluation report.

4.1.2 Omega 4 Patio Enclosure System: Determine the environmental loads from the local building official including Live Load, Wind Velocity and Ground Snow Load. Use the procedures and tables beginning on page 13 to determine the proper wall components.

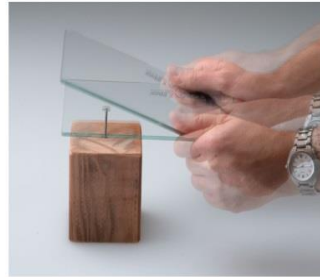
“There could be as many windows in your new patio room as there are in your entire house”. Choose Wisely!



Safety & Durability...



WITH NEARLY 400 LBS.
GLASS DOESN'T BREAK



STRIKING IT AGAINST A
NAIL LEAVES NO MARKS.

VS

INDUSTRY STANDARD GLASS



REGULAR GLASS
BREAKS EASY & IS DANGEROUS



SAFETY GLASS
WHILE IT HOLDS IT'S SHAPE,
IT DOES BREAK EASILY.



GLASS STRENGTH & DURABILITY



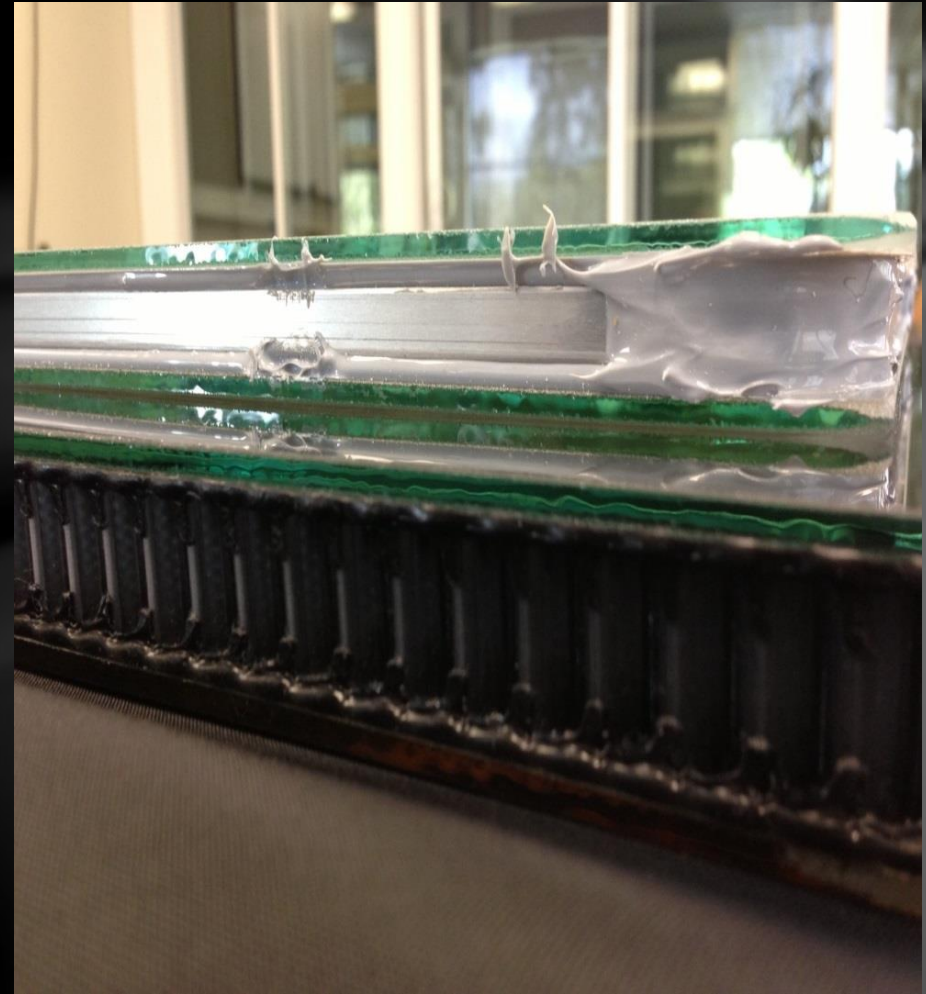
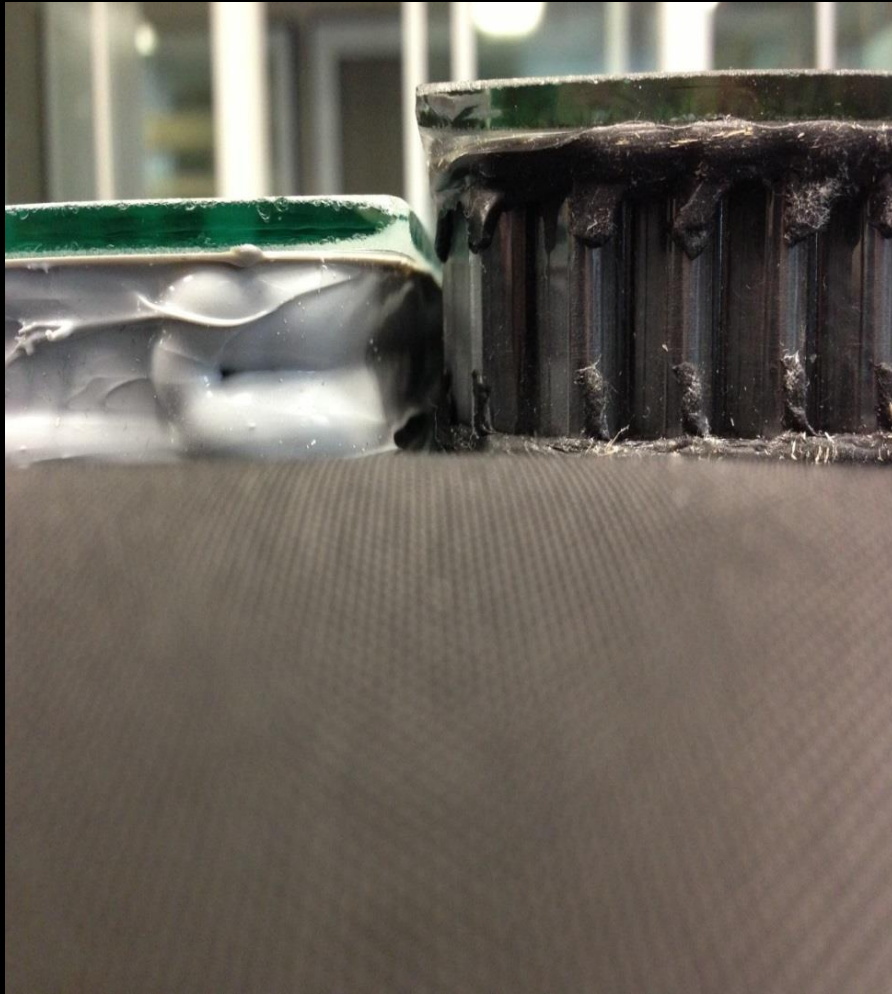
“Longevity”

We don't offer the longest insulated glass seal warranty in the industry for no reason!

Duralite Spacers
are the best product
available for insulated
glass units.



Our Insulated Glass Unit is a full 1" Thick w/Duralite Spacer
Others use $\frac{3}{4}$ " or even thinner w/Alum. Spacer and Caulk.



Wall To Wall Features

When constructing patio enclosures, you need a material that is both flexible and strong. Our Tuff-Core Walls are the ultimate all-weather, solid, insulated building panel. Tuff-Core is made of expanded polystyrene, the same material used in freezer walls, refrigerators and coolers. The energy conserved in heating and cooling quickly pays for itself.

The outer Tuff-Core 'skin' is as strong as it is beautiful plus some added benefits:

- Maintenance free
- Flexible and durable
- Moisture-resistant
- Scratch and ding-resistant



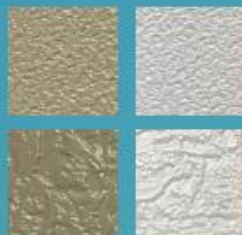
Even a screwdriver can't scratch the paint off because the color is impregnated into the material!



Our utility-H allows you to place outlets as needed, without unsightly conduits or extension cords.

Thermally Enhanced
Painted Aluminum
Structural Framing

Built-in drainage
eliminates the
worry of water
accumulation



A choice of wall panel colors
and textures to suit your style



Multi-chamber wall
system for enhanced
thermal performance

Tuff-Core Wall System

Thermal Break -
Keeps the outside out
and the inside in

It's surrounded with Thermal Barriers.



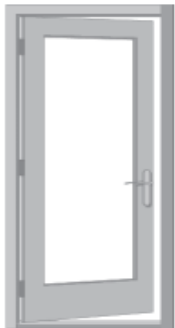
A Wide Variety of Doors Options

Open To The Possibilities

Door Options

There are five door options, all with innovative design features:

- Swing doors are 1-3/4" thick and come standard with nickel plated hardware.
- Continuous Q-Ion weather stripping around door jamb and threshold keeps wind and cold air out.
- The easy-to-operate sliding door is a welded vinyl with continuous weather stripping locking out the weather.
- 3' single door is available with glass or as a solid (no-glass) option.



3' Single Door
(3'0" x 6'8")



6' French Doors
(6'0" x 6'8")



Sliding Doors
(6'0" x 6'8")



Bi-parting Doors
(12'0" x 6'8")

C-Thru's Alpha Plus Patio Enclosures offer a wide variety of design options for Door Sections. Full View Hinged Doors or Sliding Patio Doors. Minimum Glass to Maximum Glass, the Decision is Yours!



SUNROOMS & PATIO COVERS

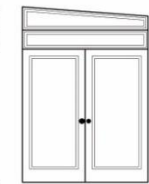
C-THRU INDUSTRIES

Dimensions & Specs

Door/Wall Mod. Combos



3' GLASS PEDESTRIAN DOOR



6' GLASS FRENCH DOOR



6' OR 8' SLIDING DOOR

NOTE:

1. STANDARD TRANSOM/KICKPLATE SIZES ARE 12" OR 24".
2. MAX. TRAPEZOID SIZE IS 48".



1477 Davril Circle • Corona, CA • 92880 • 1-800-287-2

Optional Quad Door System



Open the Indoors to the Outdoors



Traditional Sliding Patio Door



Double Full-View Doors w/Astrigal



Solid Door with Half-Moon Glass Insert



Exclusive Continuous Gear Door Hinge



With our standard continuous gear hinge, doors are always both secure and easy to open. The innovative interlocking gear design reduces friction and because the hinge extends the full length of the door, it eliminates typical problems such as door bind and sag. Security and energy savings are improved as well.



SolarX™

The **ULTIMATE** Insulated Panel

DRIFTWOOD



- ***Satin White Driftwood***

- Reduces Glare
- Adds Warmth To Your Room

- ***Patent Pending New Lock Technology***

- Redesigned Bull-Nose With 40% More EPS Foam At A Critical Junction
- Hemmed Edge Lock Provides Added Safety During Handling

New Lock Technology



FOUR SEASONS
BUILDING PRODUCTS



FOUR SEASONS
BUILDING PRODUCTS

SolarX™

The **ULTIMATE** Insulated Panel

NEW & UNIQUE FEATURES

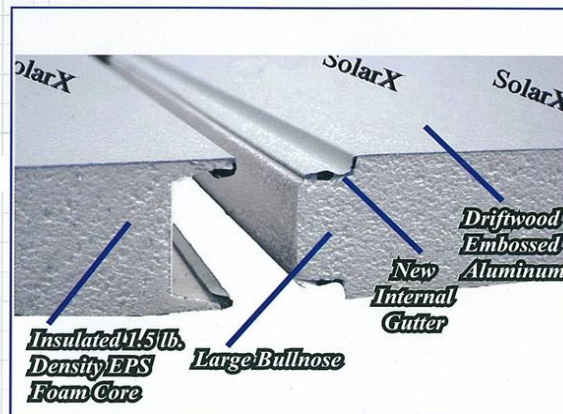
- Featuring Satin White Driftwood embossing to provide a more traditional look
- The new lock technology using state-of-the-art equipment insures a great lock every time

PERFORMANCE CHARACTERISTICS

- All new satin finish resists stains
- Insulates against heat & cold
- Available in 3", 4" & 6"
- Optional fan beams available for ceiling fans & lighting fixtures
- Available in .025 & .032 aluminum
- Hemmed edge lock provides added safety during handling
- Enlarged bull-nosed feature of foam core insures superior panel to panel insulation. As well as provides edge protection to the lock during transportation

PRODUCT CHARACTERISTICS

- 1.5 lb. core for added strength, insulation & longer spans
- Panel span calculations fully certified by professional engineers.
- 20 year limited warranty covers paint finish & delamination
- Large bull nose lock for better insulation
- Installer friendly snap lock that guarantees panel to panel lock
- Excellent Insulating Value
 - Solar X 3" Provides R 12.9
 - Solar X 4" Provides R 17.2
 - Solar X 6" Provides R 25.8

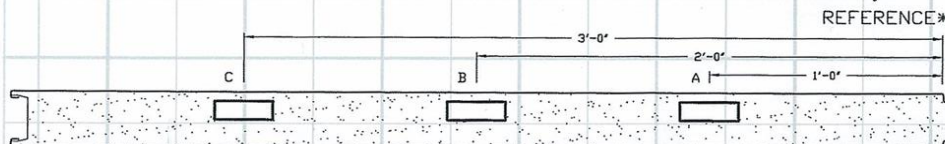


SOLAR X DRIFTWOOD



The New Satin, Driftwood Embossing Reduces Glare & Adds Warmth To Your Home

Concealed Fan Beam Available In 1 of 3 Positions That Allows For Installation Flexibility



Location Must Be Specified At Time Of Order



FOUR SEASONS
BUILDING PRODUCTS



FOUR SEASONS
BUILDING PRODUCTS

Double Catch Gutter

Exceptional Design.

Available for 3" & 4" insulated roof panels.

- Ease of Installation
- Safety Reservoir: Drains water away from roof panels.
- Safety Reservoir: Eliminates siphoning water up seams.
- Safety Reservoir:
Reduces leaks & service calls.
- Mounts flush-eliminating water backup onto roof
- Unique scallop facing complements overall look of roof system.
- Optional leaf screen.



Gutter Lengths

- White 20' & 24'
- Bronze, Sandstone, Wheat 24'

Fascia Lengths

- White 16' & 25'
- Bronze, Sandstone, Wheat 24'

- Fascia Lengths can be used as perimeter trim without gutter.
- Color and sizes vary by location, check with your local service center for details.

Insulated Roof Panels w/Plank Option



PlyalumTM

Insulated Roof Panels

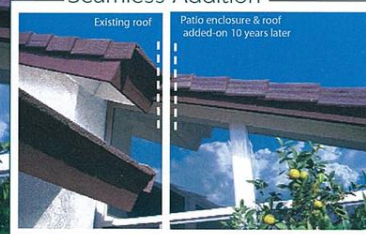


Looking for a seamless roof transition between an existing dwelling and an addition?

Allmet's Plyalum OSB Laminated Insulated Roof Panels have been designed to accomplish just this. Allowing for the application of conventional roofing products (tile, metal, wood or asphalt), this unique panel makes it easy to blend additions of patio covers and patio enclosures with existing roof lines and roofing material. The result? A seamless transition that complements the existing structure.



Seamless Addition



Product Brief

Specifications

Insulation Value

Accommodates

Ideal For

Embossing

Lock

Warranty

Engineering

Availability

Ceiling Fans & Lights

HOA

Moisture and mildew resistant polystyrene EPS core is sandwiched between 0.24" aluminum skin on top and bottom with 7/16" OSB board on top. Panels available in 3.5" and 4" thicknesses and up to 16' lengths. Equivalent to 10 inches of hardwood or 48 inches of brick. Insulates against heat, cold and noise.

Wood and asphalt shingles, concrete tile, Gerard® stone-coated steel, tile and shake shingles, or Gerard® standing seam panels.

Patio enclosures, patio covers and utility sheds.

White stucco underside embossing.

Produces clean, water-tight seams. No fasteners are required.

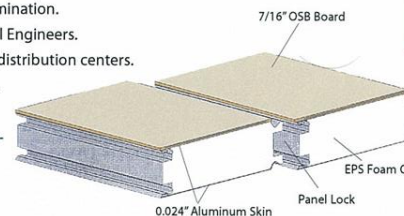
10-year limited warranty covers paint finish and delamination.

Panel span calculations 100% certified by Professional Engineers.

Available from Metals USA Western & Central Region distribution centers.

Fan beams available for ceiling fans and light fixtures.

Homeowner Association friendly.





Gable Roof With Composition Shingles





GABLE ROOM WITH TILE ROOF OPTION



LIFETIME LIMITED MATERIAL WARRANTY

Products Covered by This Warranty:

Sunrooms, Garden Rooms, Patio Enclosures, Windows, Doors and Patio Covers manufactured or supplied by C-Thru Industries.

Terms of Warranty: (Effective on purchases made beginning 1-1-13)

This Lifetime Limited Material Warranty is to the original retail purchaser of the C-Thru products. This warranty is for the material (hereinafter referred to as the "Products") only. This warranty does not include costs of removal, reinstallation, shipping or handling of any replacement parts unless specifically implied herein.

- 1) Painted aluminum parts will not peel, blister, flake, chip, split, rust or crack subject to the limitations and conditions listed herein for the life of the original purchaser. The term "crack" as used herein shall not include minute fracturing of the Products which may occur in the fabrication of the Products.
- 2) Hardware and Weather-Strip items used in the manufacture of the enclosure windows and doors, will be free from defects and that under normal use will not fail or render Products unserviceable subject to the limitations and conditions listed herein for the life of the original purchaser.
- 3) Vinyl Extrusions and Vinyl Thermal Cladding will be free from defects and that under normal use will not fail or render Products unserviceable subject to the limitations and conditions listed herein for the life of the original purchaser.
- 4) Laminated Roof Panels and laminated wall panels will be free from defects and that under normal conditions and use will not delaminate for a period of fifteen (15) years after the date of purchase and subject to the limitations and conditions listed herein.
- 5) Insulated Glass Panels under normal conditions and use are warranted not to fail for a period of twenty (20) years after the date of purchase and subject to the limitations and conditions listed herein.
- 6) All Glass Panels shall be warranted against incidental breakage for the life of the original purchaser.

Parts or equipment that have become obsolete or discontinued are not covered by this limited warranty. These obsolete or discontinued items can include, but are not limited to, glass types, glass sizes, paneling types, extrusion color, etc.

C-Thru is giving you an expressed Lifetime Limited Material Warranty under the provisions of the Magnuson-Moss Federal Warranty Act. C-Thru cannot and shall not be liable to you for breach of any other written or oral expressed or implied warranties, such as those, if any, given to you by dealers, contractors, applicators or distributors.

All warranty claims must first be presented to the original dealer, contractor, applicator or distributor from whom the C-Thru Product was purchased.

Transference:

This Lifetime Limited Material Warranty is fully transferrable. To qualify for transfer, the new owner must send written request for warranty transfer to C-Thru Industries within 60-days of sale of the property.

Notice and Inspection:

If you think your products contain manufacturing defects, written notice of any claimed defect shall be sent to C-Thru Industries at 1477 Davril Circle, Corona, CA 92880, within thirty (30) days of first discovering a claimed defect. The notice shall describe the defect claimed, the work order or contract number, date product was installed, address of the installed product and name, address and phone number of the contractor, applicator or distributor who either installed or sold you the product. C-Thru Industries shall then be given a reasonable time in which to inspect said defect. Any repairs or attempted repairs made before inspection by C-Thru may void the terms of this warranty.

Remedies and Prorations:

If after inspection, it is determined by C-Thru that the said defect is covered under this warranty, then C-Thru shall have one hundred twenty (120) days in which to correct said defect, by either refinishing, or replacing the defective material. C-Thru shall not be liable in any event for any shipping, handling, labor, removal or installation cost to remedy the defective product unless specifically implied herein. All replacement material is furnished F.O.B. Corona, CA.

During the first year after installation of the product, C-Thru will pay for any labor charges (reasonable and customary) associated with the removal and installation of any defective component covered under this Lifetime Limited Material Warranty subject to the limitations and conditions listed herein. Shipping and handling costs are not covered by C-Thru Industries. C-Thru Industries will have the option of selecting the contractor to furnish the labor in correcting the defect.

WARRANTY HIGHLIGHTS

- Lifetime Warranty
- Transferable
- Incidental Glass Breakage
- 20 year Warranty on Insulated Glass
- and More...

Exclusions and Limitations:

This warranty applies only to products erected within the United States and Canada. C-Thru Industries does not control the installation of its products and does not warrant against conditions arising from defective or inappropriate installation. C-Thru cannot be responsible for damages from causes outside of its control and does not warrant against damage from earthquake, lightning, hail, hurricane, tornado, hailstorm, wind borne objects, flooding or other acts of God; fire, vandalism, riot, insurrection, civil disorder or contact with harmful chemicals, fumes, vapors or salt spray directly applied to the atmosphere, settlement, distortion, warping, failure or cracking of the structure to which the product is affixed or any changes or additions thereto; abuse, misuse or failure to provide reasonable maintenance of the product or changes in the product due to normal weathering process. This Lifetime Limited Material Warranty is not applicable to products installed beyond the design limits set by the manufacturer. The warranty does not cover fading or chalking of any painted finish or other surface.

Any repair, refinishing, replacement or payment shall not extend the original warranty period. This warranty shall not be valid or enforceable unless it is registered with C-Thru Industries within thirty (30) days after completion of installation of the products covered hereby using the online registration process at www.cthrusunrooms.com/warrantyreg.aspx. If any statement on the online registration form does not contain the true name, address, phone number and other pertinent information of the original purchaser, this warranty shall not be valid or enforceable.

We accept no obligations or liabilities for incidental and consequential damages for the breach of any expressed or implied warranty of merchantability, arising out of or in connection with the use, performance, or other indirect damages with the respect to loss of property, revenues or profit, or the removal, installation or reinstallation. No representative or other person is authorized to offer any other warranty, or assume any other liabilities, on behalf of C-Thru Industries.

This warranty is strictly limited to the products as outlined herein and shall not apply to failure, leaks or consequential damages caused by misapplication of the products. This warranty does not apply to the products that are not furnished and produced by C-Thru Industries.

Legal Rights:

Some states do not allow the exclusion or limitation of consequential damages, so the above limitations or exclusions may not apply to you.



Dramatic “Before” & “After” Outdoor Living Transformations



Alpha Plus Garden Room



Turn Wasted Space to Living Space



Alpha Plus Gabled Room on Deck



Kids Recreation Room...



Upstairs Addition....



A Great Addition to Your Home!!!



Convert Outdoor Space to Indoor Space



Old & Tired to New & Fresh Space..



Replace Your Existing Room



Backyard Cottage



Enclosing Porch With A New Alpha Plus Patio Enclosure



Beautiful Addition !!!



Endless Design Options!!!



Second Story Conversion...



Unused Yard Space ?



Gabled Room on Raised Deck



Something Old to Something New



Ho Hum.. Too .. WOW!!



Perfect Addition!



From Nothing to Something Great!



Transforming an Existing Patio Cover





Pouring Your Slab.





Manufacturers of World Class Sunrooms Since 1947



Your New Sunroom Arrives!



© 2005 C-THRU Industries, Inc.

What Makes C-Thru Sunrooms Better



Laying Out the Room





Your Walls Go Up!





Constructing Your New Roof





Your Room Is Finished!





Ready to Party!





FOUR SEASONS
BUILDING PRODUCTS

